

# The vision continues!

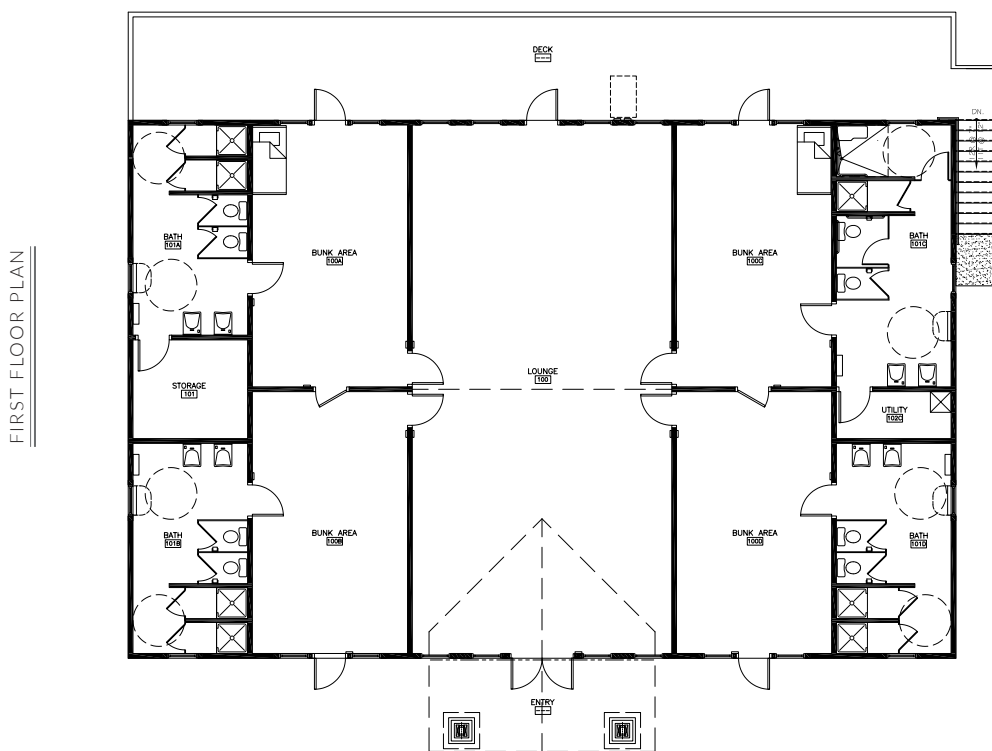
“In order to meet the needs of our current guests and those with physical disabilities, we need to construct new cabins and lodges.”

Camp Orchard Hill began back in the late 1960's with the vision of Robert Palmer and John Williams who constructed the original cabins and dining hall. For more than fifty years, the cabin buildings have served thousands of campers and guests. They have been updated several times, including a complete renovation in 1995. They have served our guests well!

However, as times have changed and people's needs and wants have changed, our cabins simply do not meet the needs of many of our guests. The lack of indoor bathrooms and the fact that the cabins are not ADA accessible makes it difficult for many of our guests to enjoy the Orchard Hill experience. In order to meet the needs of our current guests and those we cannot currently serve, we need to construct new cabins and lodges. The new housing will be ground level

with ramps and sidewalks to make them fully ADA accessible. Each building will include ADA accessible bathrooms and showers and each building in the cabin area will be connected with sidewalks to create access for all guests, regardless of their mobility.

In January 2022 we completed the first phase of this plan - a new 4200 sq. ft. lodge. Incredibly, this project was completed debt-free thanks to the generosity of our camp family!



**MAKE A SECURE CONTRIBUTION!**

On Our Website:  
[camporchardhill.com](http://camporchardhill.com)

By Mail:  
640 Orange Road  
Dallas, PA 18612

By Phone:  
(570) 333-4098



*celebrating 50 years of ministry!*

640 Orange Road • Dallas, PA 18612 • (570) 333-4098 • [camporchardhill.com](http://camporchardhill.com)

# additional view...

The new lodge includes a common meeting space, lounge and four individual rooms with connected bathrooms for each room. Each bathroom includes two toilets, two showers and a double vanity. The new lodge includes a full-length deck that is fully accessible and offers a beautiful view of Lake Manjo.

This new modern facility will serve the unique needs of all of our guests well. It will serve youth groups with the possibility for adjoining rooms and bunks. It will serve our family groups with individual rooms and private bathrooms connected to each room. It will serve our adult groups with modern amenities and increased comfort throughout. Additionally, each new building will enable us to serve children and adults with special needs and physical disabilities. Through a grant from the AllOne Foundation we have developed a year-round respite program for

special needs children and their families. This new lodge enables us to provide overnight respite, offering parents a much needed, reliable and consistent break.

We plan to replace all of the existing housing with an overall cost of approximately 2 million. Each new cabin will cost \$200,000 and the second lodge will cost \$650,000. We plan to construct a total of six new cabins and two lodges (see attached Google Earth map).

Incredible News! A donor family has committed a 2 for 1 matching gift. For every dollar we raise they will match with two dollars, up to \$200,000 for a total of \$300,000. Your gift will be tripled simply by responding to the match!

With the funds we have currently and this matching gift, we have decided to move forward with the construction of the next Guest Group Lodge. We plan to begin construction of the lodge this spring 2022. The next Guest Group Lodge will be a mirror image of the first lodge with the same floor plan and amenities.

Thank you for your support of past projects and needs and for your prayerful consideration of support for this new project! We are excited about what God has in store for the future of Camp Orchard Hill.

