

The vision continues!

“In order to meet the needs of our current guests and those with physical disabilities, we need to construct new cabins and lodges.”

Camp Orchard Hill began back in the late 1960's with the vision of Robert Palmer and John Williams who constructed the original cabins and dining hall. For more than fifty years, the cabin buildings have served thousands of campers and guests. They have been updated several times, including a complete renovation in 1995. They have served our guests well!

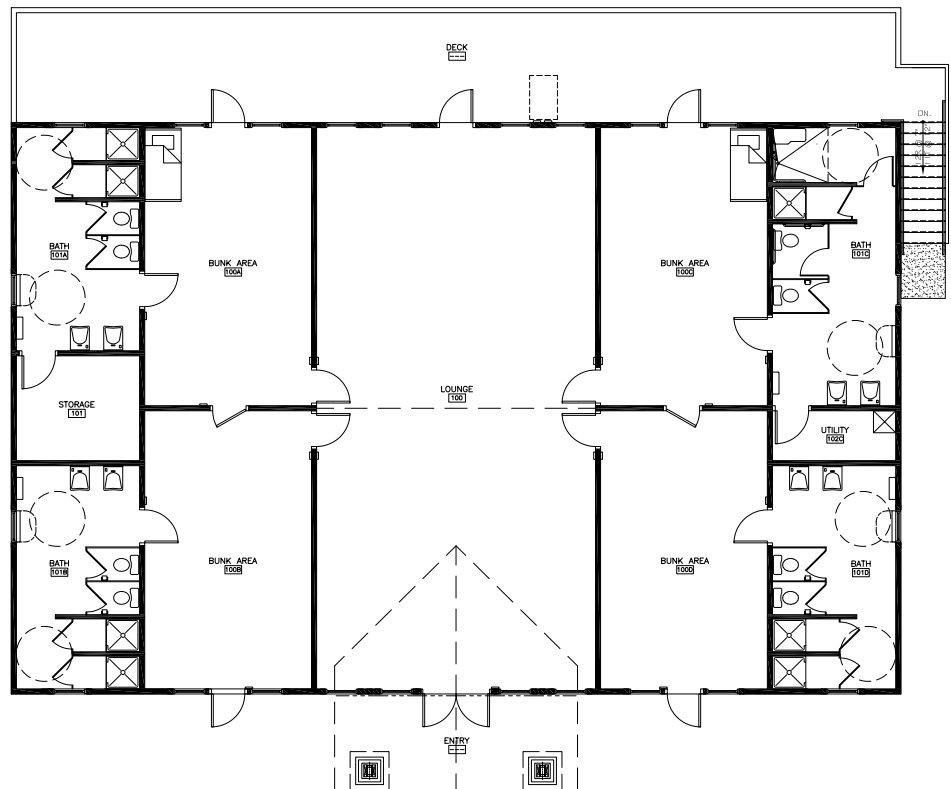
However, as times have changed, our cabins simply do not meet the needs of many of our guests. The lack of indoor bathrooms and the fact that the cabins are not ADA accessible, makes it difficult for many of our guests to enjoy the Orchard Hill experience. In order to meet the needs of our current guests and those with physical disabilities, we need to construct new cabins and lodges.

The new housing will be ground level with ramps and sidewalks to make them fully ADA accessible. Each building will include ADA accessible bathrooms and

showers and each building in the cabin area will be connected with sidewalks to create access for all guests, regardless of their mobility.

The first phase of the plan is to construct a new 4200 sq. ft. lodge. It will include a common meeting space, lounge and four individual rooms with connected bathrooms. Each bathroom will include two toilets, two showers and a double vanity. The new lodge will include a wide deck that is fully accessible and offers a beautiful view of Lake Manjo. (see floor plan below)

FIRST FLOOR PLAN



MAKE A SECURE CONTRIBUTION!

On Our Website:
camporchardhill.com

By Mail:
640 Orange Road
Dallas, PA 18612

By Phone:
(570) 333-4098



additional view...

This new modern facility will serve the unique needs of all of our guests. It will serve youth groups with the possibility for adjoining rooms and bunks. It will serve our family groups with individual rooms and private bathrooms connected to each room. It will serve our adult groups with modern amenities and increased comfort throughout.

Additionally, each new building will enable us to serve children and adults with special needs and physical disabilities. We have just been awarded a grant to develop a year-round respite program for children with special needs and their families. Our first new lodge will enable us to provide overnight respite, offering parents a much needed, reliable and consistent break.

In order to construct the first lodge, we need to improve our infrastructure by adding water and sewer lines, as well as a new electrical service. New building codes also require us to construct a sprinkler system that will serve all of our eventual housing.

With the additional infrastructure, we anticipate that the cost of the first lodge will be \$550,000. We anticipate that each new cabin will cost \$150,000 and the second lodge will cost \$450,000. We plan to construct a total of six new cabins and two lodges, with an overall project cost of \$1.5-2 million. (see site plan below)

Great News! We received permits to construct the first new Guest Group Lodge and work has already begun. We plan to construct this new housing debt-free, as God provides funding for each new building. At the present time we have received over \$300,000 in gifts and pledges.

Thank you for your support of past projects and for your prayerful consideration of support for this new project! We are excited about what God has in store for the future of Camp Orchard Hill.

SITE PLAN

CAMP ORCHARD HILL

PREPARED BY: MILNES ENGINEERING, INC.

